

LENGUAJE MUSICAL ROJO

1. Indica el compás y pon las líneas divisorias en los siguientes ejercicios:

Three musical staves with rhythmic exercises. The first staff has a 3/4 time signature and a triplet of eighth notes. The second staff has a 3/4 time signature and a triplet of eighth notes. The third staff has a 3/4 time signature and a triplet of eighth notes.

2. Clasifica los siguientes intervallos:

Two musical staves showing various intervals between notes. The first staff shows intervals: C4 to E4, C4 to G4, C4 to Bb4, C4 to C5, C4 to D5, C4 to E5, C4 to F5, C4 to G5, C4 to Ab5, C4 to Bb5, C4 to C6. The second staff shows intervals: C4 to Bb3, C4 to B3, C4 to A3, C4 to G3, C4 to F3, C4 to E3, C4 to D3, C4 to C4, C4 to B3, C4 to A3, C4 to G3, C4 to F3, C4 to E3, C4 to D3, C4 to C4.

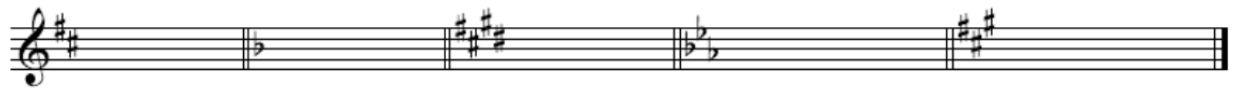
3. Completa cada compás con el número de figuras indicadas.

Two musical staves with empty measures and time signatures. The first staff has a 4/4 time signature and three measures with 15, 12, and 11 figures respectively. The second staff has a 2/4 time signature and three measures with 8, 9, and 7 figures respectively.

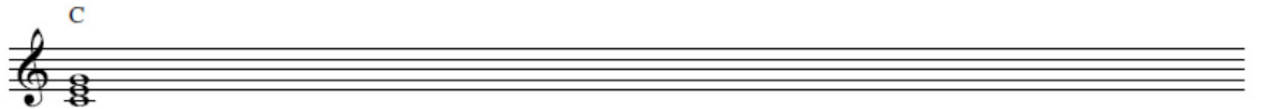
4. Forma los siguientes intervallos a partir de la nota dada.

A musical staff with seven empty measures and labels for intervals: 3ª M asc., 5ª J desc., 6ª m desc., 3ª m desc., 7ª dism. desc., 8ª J asc., 4ª J desc.

5. Escribe el nombre de las tonalidades que corresponden a las siguientes armaduras:



6. Forma los acordes tríada en la escala de Do Mayor:



7. Solfea los siguientes ejercicios: